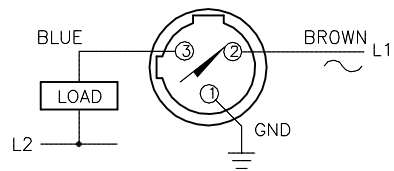
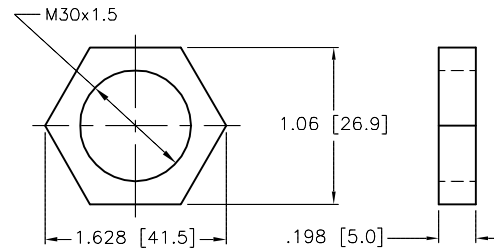


WIRING DIAGRAM



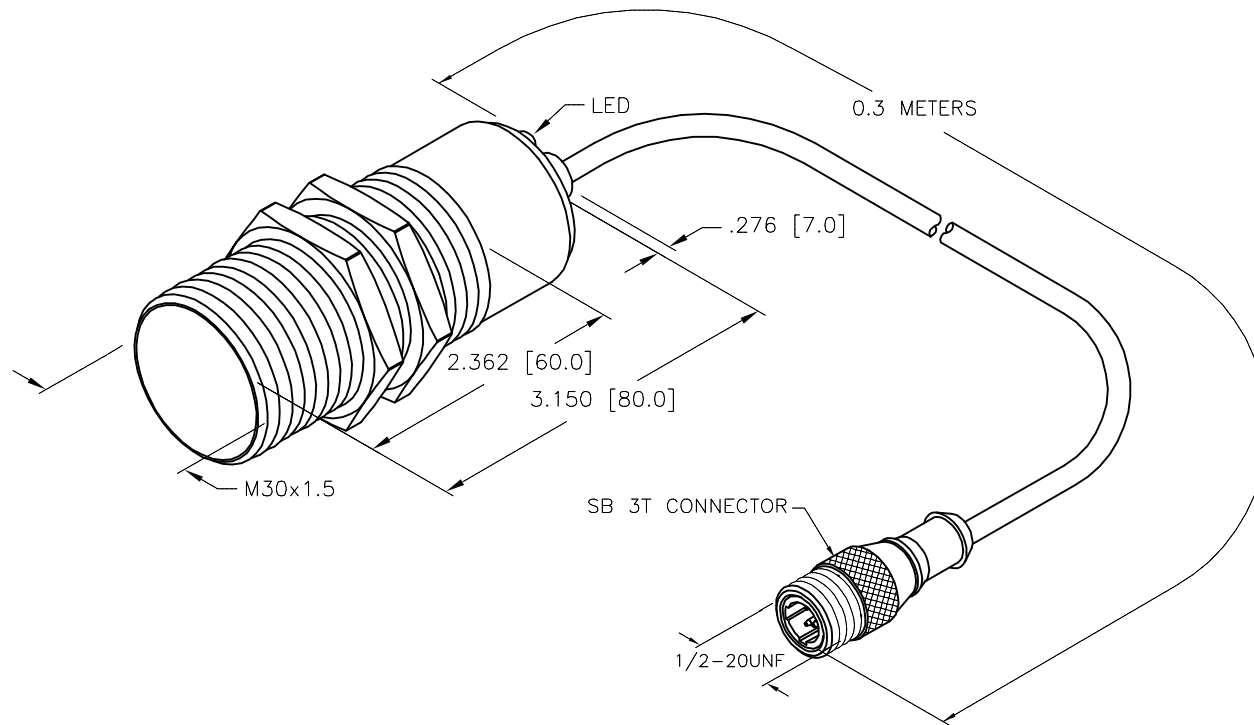
WARNING: NO SHORT-CIRCUIT PROTECTION
ALWAYS WIRE A LOAD IN SERIES WITH THE SENSOR.

LOCKNUT LN-M30



SPECIFICATIONS

RATED OPERATING DISTANCE	10mm [.394"]
MOUNTING MODE	FLUSH
HYSTERESIS	3-15%
MIN. REPEAT ACCURACY	≤ 2%
TEMPERATURE DRIFT	≤ ± 10% ≤ ± 20%, ≥ +70°C
OPERATING TEMPERATURE	-25°C to +120°C (-13°F to +248°F)
RATED OPERATIONAL VOLTAGE	20-250 VAC
AC RATED OPERATIONAL CURRENT	≤ 400 mA
FREQUENCY	50-60Hz
RESIDUAL CURRENT	≤ 1.7 mA
RATED INSULATION VOLTAGE	≤ 1.5 kV
SURGE CURRENT	≤ 8.0 A (≤ 10ms MAX. 5 Hz.)
MAX. VOLTAGE DROP	≤ 6.0 V
OUTPUT FUNCTION	NORMALLY OPEN, 2-WIRE
SMALLEST OPERATING CURRENT	≥ 3.0 mA
MAX. SWITCHING FREQUENCY	≤ 0.2 kHz
HOUSING MATERIAL/PLATING	BRASS/CHROME
ACTIVE FACE MATERIAL	PLASTIC, PA12-GF30
END CAP MATERIAL	PLASTIC, PA12-GF30
CABLE	ø6.0, SILICONE
SHOCK RESISTANCE	30 g, 11 ms
VIBRATION RESISTANCE	55 Hz, 1 mm AMPLITUDE (IN ALL 3 PLANES)
DEGREE OF PROTECTION	IP67 (SENSOR ONLY)
SWITCHING STATUS INDICATION	LED, YELLOW



NOTES:

1. "/S120" DESIGNATES MAX. OPERATING TEMPERATURE OF +120°C.

SOURCE DRAWING - FOR REFERENCE ONLY

RELATED DOCUMENTS		3RD ANGLE PROJECTION		<div>THIS DRAWING IS CONFIDENTIAL AND THE PROPERTY OF TURCK INC. USE OF THIS DOCUMENT WITHOUT WRITTEN PERMISSION IS PROHIBITED.</div> <div>TURCK</div> <div>3000 CAMPUS DRIVE MINNEAPOLIS, MN 55441 1-800-544-7769 (763) 553-7300 (763) 553-0708 fax www.turck.us</div>				
1. 2. 3. 4.								
MATERIAL		DRFT	RDS	DATE	10/26/09	DESCRIPTION		
FINISH		APVD		SCALE		B110-M30-AZ3X-0.3-SB3T/S120		
				1=1.3				
CONTACT TURCK FOR MORE INFORMATION		UNIT OF MEASUREMENT				IDENTIFICATION NO.		REV
		INCH [MILLIMETER]				4316481		D
		DO NOT SCALE THIS DRAWING				FILE: 4316481		SHEET 1 OF 1

D	UPDATE DESCRIPTION	RDS	08/28/20	76127
REV	DESCRIPTION	BY	DATE	ECO NO.